



***Biomass: Neither Automatically Good  
nor Automatically Bad –  
It all Depends***

**Barbara Bramble  
National Wildlife Federation  
And Chair, Board of Directors RSB**

**NARA – 2014 – Seattle, Washington**



# Forests and Bioenergy



- From the old “Forest Wars” to incentives
- History and context matter:
  - Timber
  - Paper
  - Biomass

# Modern Forest Debate

- **Sound Management – hard won**
- **Forest Certification – The FSC**
- **New Demand – Threat or Opportunity?**
- **Impacts of Climate Change – Progress at Risk**
- **International Negotiations on REDD +**



# Scale Matters

- **Competing Demands for Biomass**
- **Global Demand Projected to Double**
- **Forest Area Lost to Agriculture and Development**
- **What is “real” GHG story?**



## *Why is a Sustainability standard needed ?*

- **The expansion of biomass poses risks to the environment:**

*Deforestation / Biological diversity loss*

*Depletion of water sources*

*Greenhouse gas emissions (Global concern)*

*Spread of Invasive Species*



# Why is a Sustainability Standard Needed?

➤ And risks for people:

- *Land and water rights conflicts*
- *Labor and contracting conditions*
- *Food security*

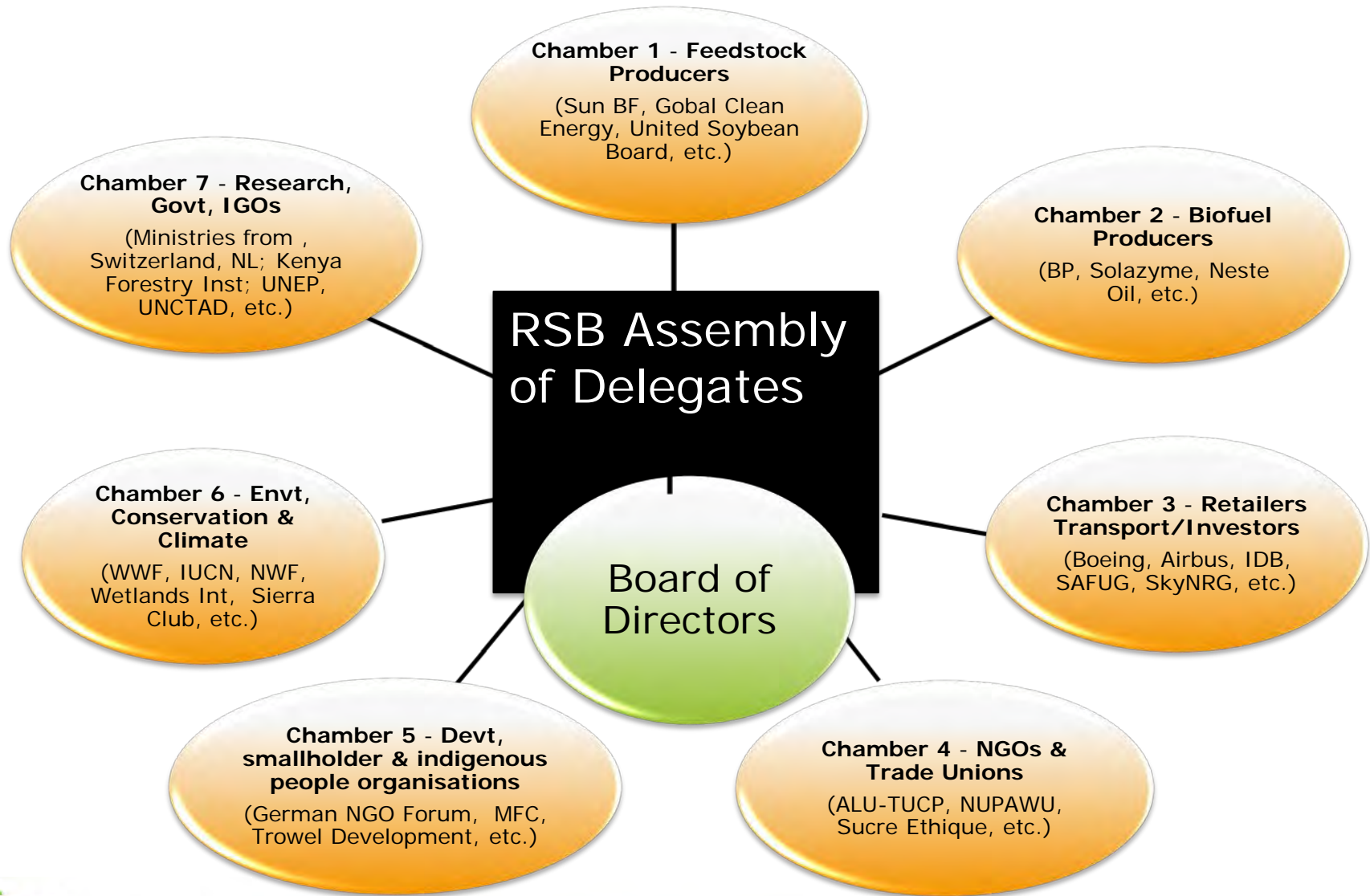


# *Sustainability and Biomass: The RSB Standard in a Nutshell*

**Global, voluntary, multi-stakeholder standard on sustainability and biomass – and Certification System**

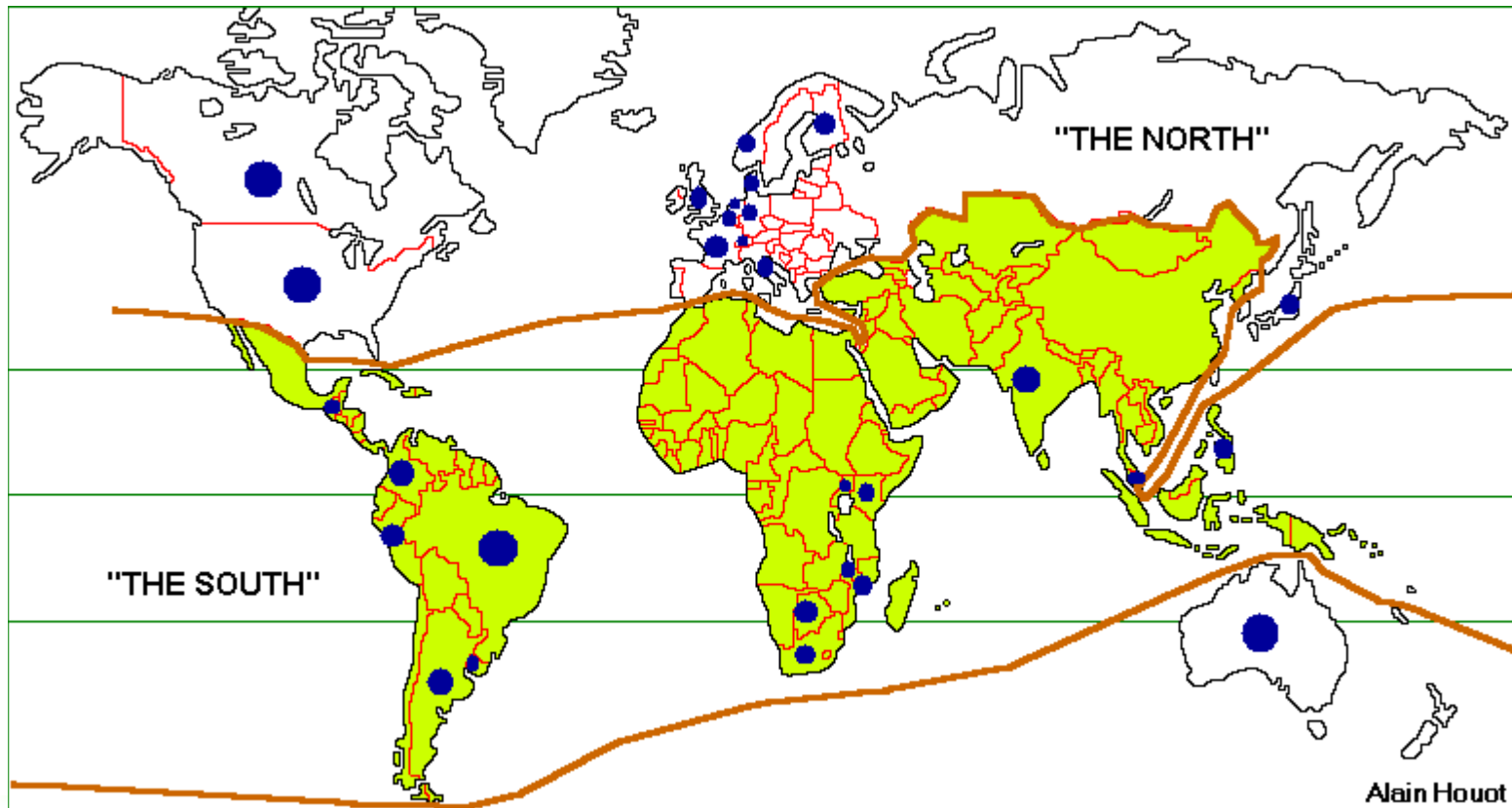
- **Enables producers and purchasers to differentiate better biomass**
- **Covers entire supply chains**
- **Covers all kinds of biofuels and biomass**
- **“Benchmarking”**: working with other standards & regulations







# A global discussion: RSB members



# *RSB Principles & Criteria*

Principle 1:  
**Legality**

Principle 2:  
**Planning,  
Monitoring &  
Continuous  
Improvement**

Principle 3:  
**Greenhouse  
Gas  
Emissions**

Principle 4:  
**Human & Labor  
Rights**

Principle 5:  
**Rural &  
Social  
Development**

Principle 6:  
**Local Food  
Security**

Principle 7:  
**Conservation**

Principle 8:  
**Soil**

Principle 9:  
**Water**

Principle 10:  
**Air**

Principle 11:  
**Use of Technology,  
Inputs, &  
Management of  
Waste**

Principle 12:  
**Land Rights**



# GreenWood Tree Farm



© Greenwood Resources

- First joint certification between RSB and FSC
- Careful mix of saw timber and quick coppice bioenergy
- Maintains cover and carbon



# Mt. Zion Olympic National Forest

**What is the Correct Application of the Precautionary Principle?**



*Thank you!*



© iStockphoto.com/Nancy Tripp

**Barbara Bramble:** [bramble@nwf.org](mailto:bramble@nwf.org)

**RSB Secretariat:** [rsb@rsb.org](mailto:rsb@rsb.org)

<http://www.rsb.org>

