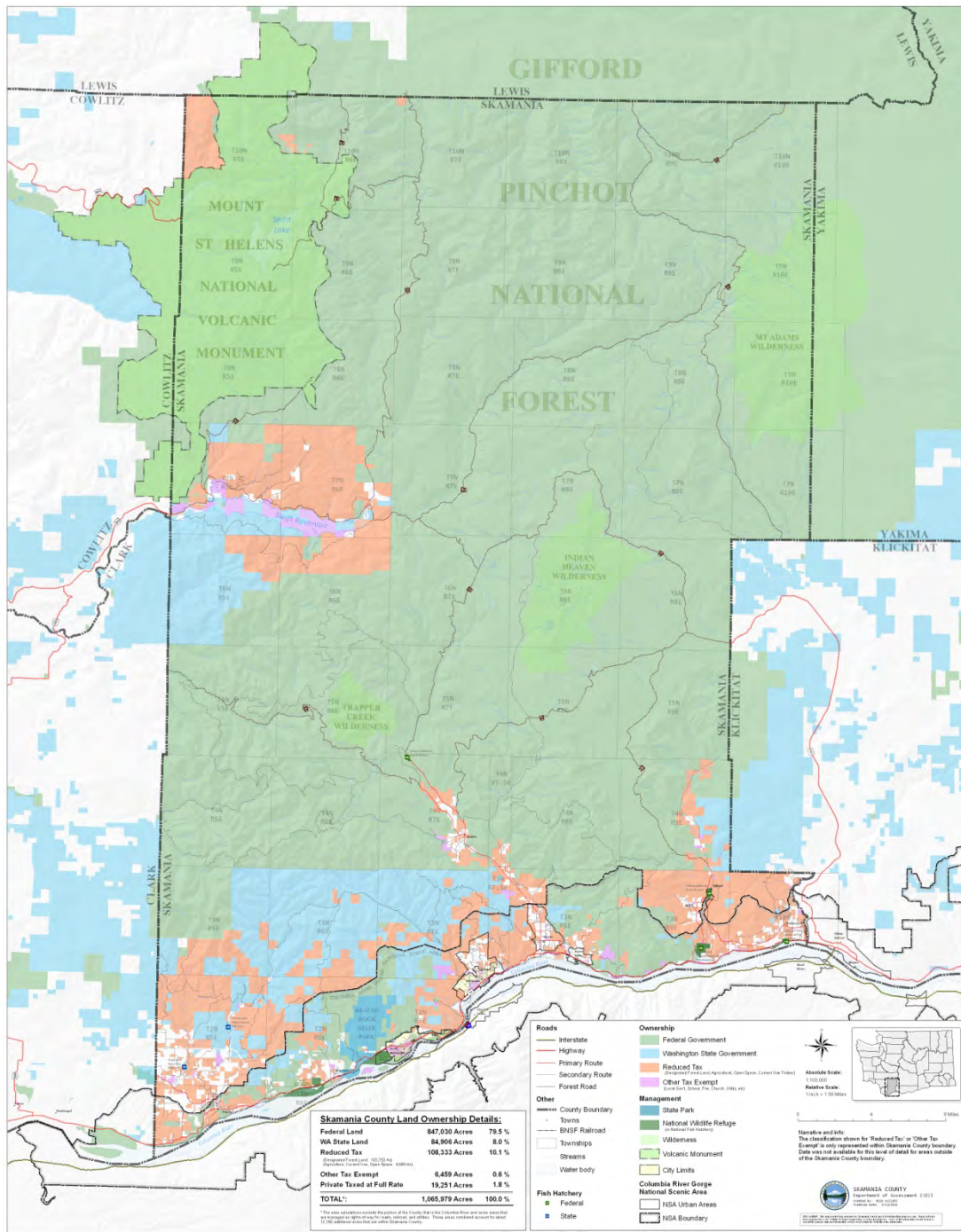




Skamania County from Mt. St. Helens in the north ...

... to the **Columbia River** in the south.





Skamania County:

- 78 % USFS (GPNF)
- 5 % CRGNSA
- 6 % WA State
- 9 % Private
- Timberland
- 2% Private land (commercial, residential, or agricultural development)



Tom
Tidwell
Chief
of
Forest
(
B
P
)

Welcome to the web site of the U.S. Forest Service Chief's Office! In case you're new to the Forest Service, our purpose is twofold:

(1) to make sure that America's forests and grasslands are in the **healthiest condition they can be**; and

(2) to see to it that you have lots of opportunities to use, enjoy, and care for the lands and waters that sustain us all.

Our focus at the Forest Service is on the ground—on the places where you live, work, and play. Above all, we're dedicated to keeping everyone on the ground safe and secure. **Our goal is to serve our communities, both rural and urban.** One way is to work with partners for healthy, resilient forests and rangelands on federal, state, and private lands. Healthy lands support the outdoor activities of millions of Americans each year, a service we proudly provide on the National Forest System. **A central concern for all Americans is sustainable land management.** We owe it to ourselves and to future generations to **protect our communities, properties, and wildland resources from catastrophic fire and other threats.**

You own your national forests and grasslands, and we are here to serve you. As you browse our website, please think of ways we can better serve.

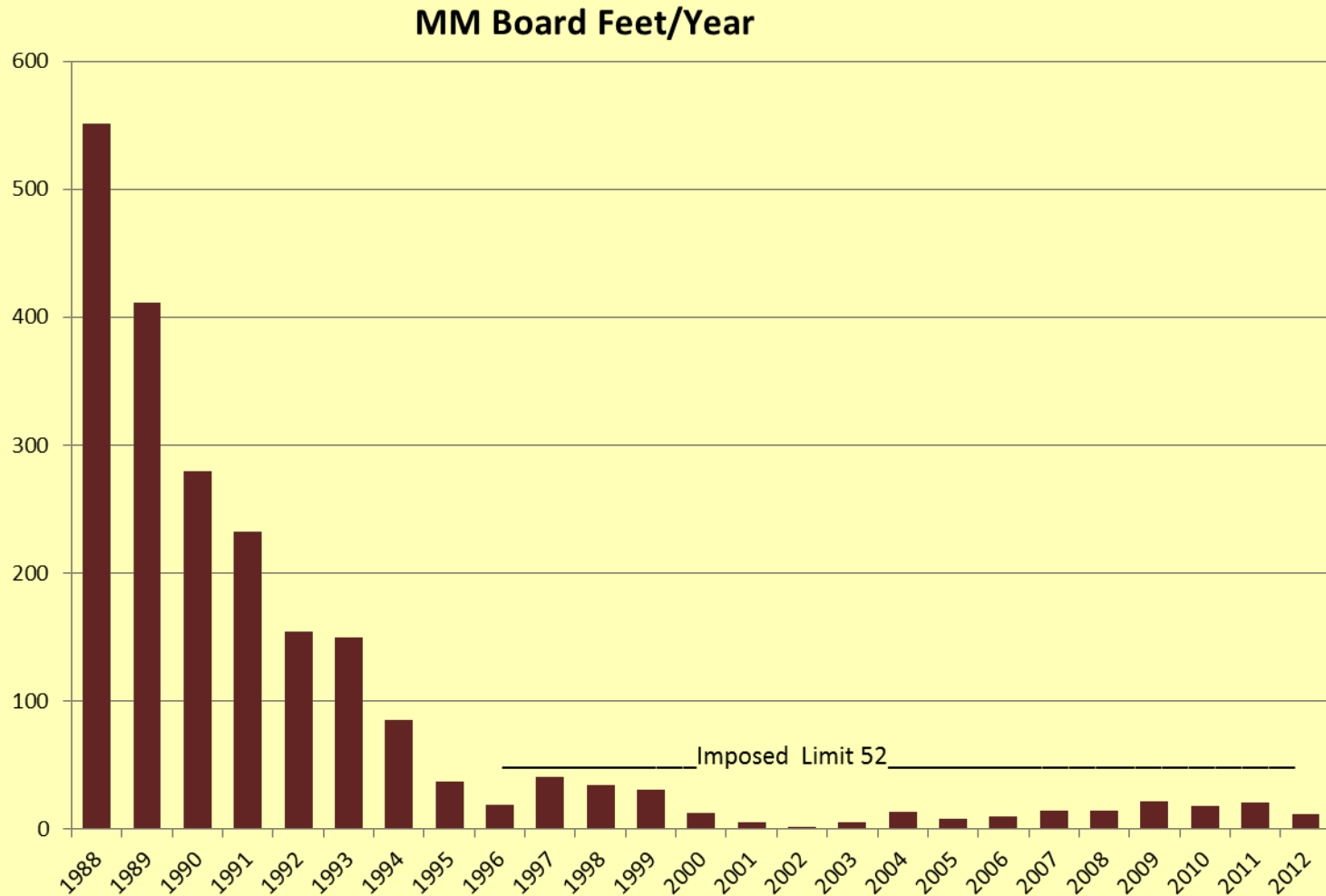
Skamania County

Cold Springs fire





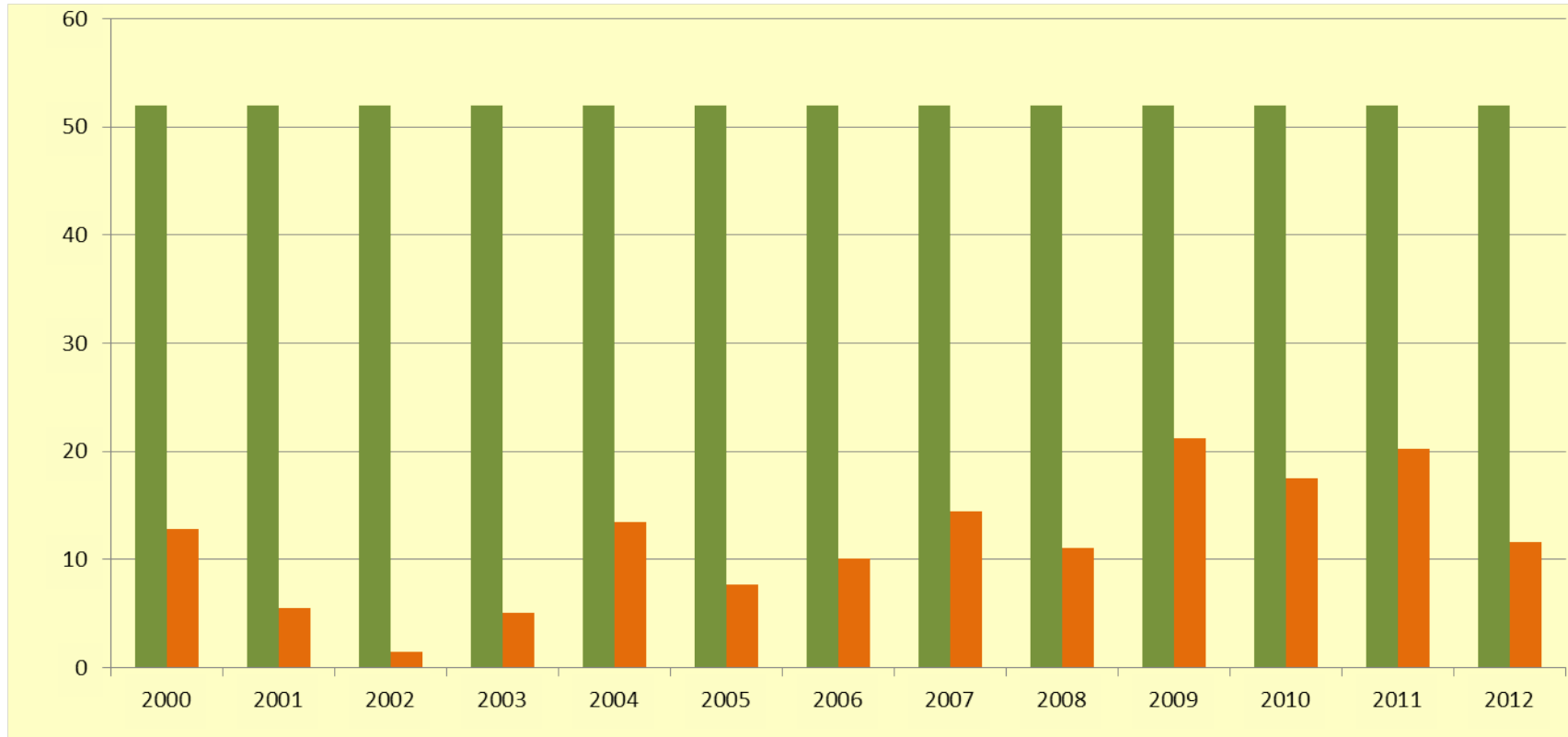
FS GP Historical Timber Yield 1988-2012





Timber Harvest

2000-2012 Allowable vs Actual



Potential BF over 13 yrs = 676,000,000 vs Actual = 152,000,000

Source- FS Annual CUTS_{203F} reports

County Budget Impact

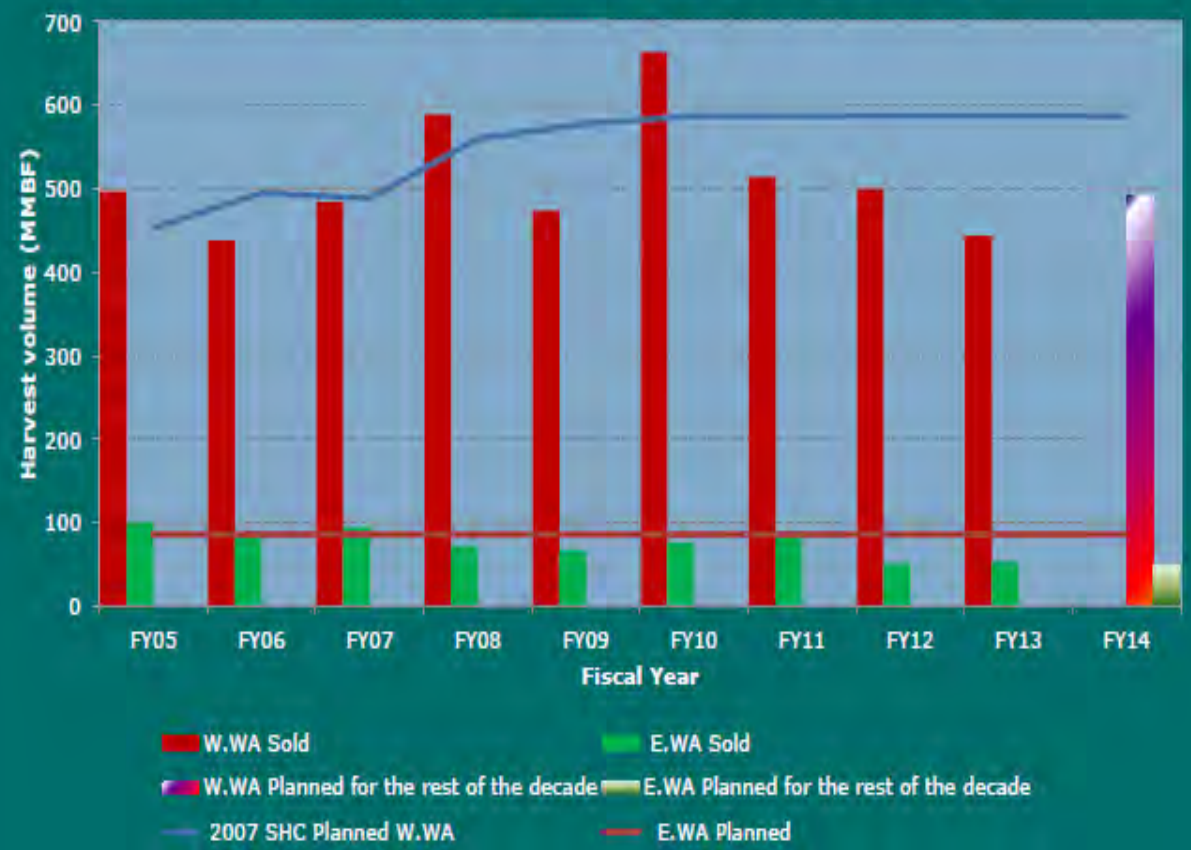
	<u>2010:</u>	<u>2014:</u>
Budget	\$ 50 Million	\$ 29 Million
Staff	240	138
SRS	\$ 3.5 Million	\$ 1.8 Million

(Middle School closed in 2012)

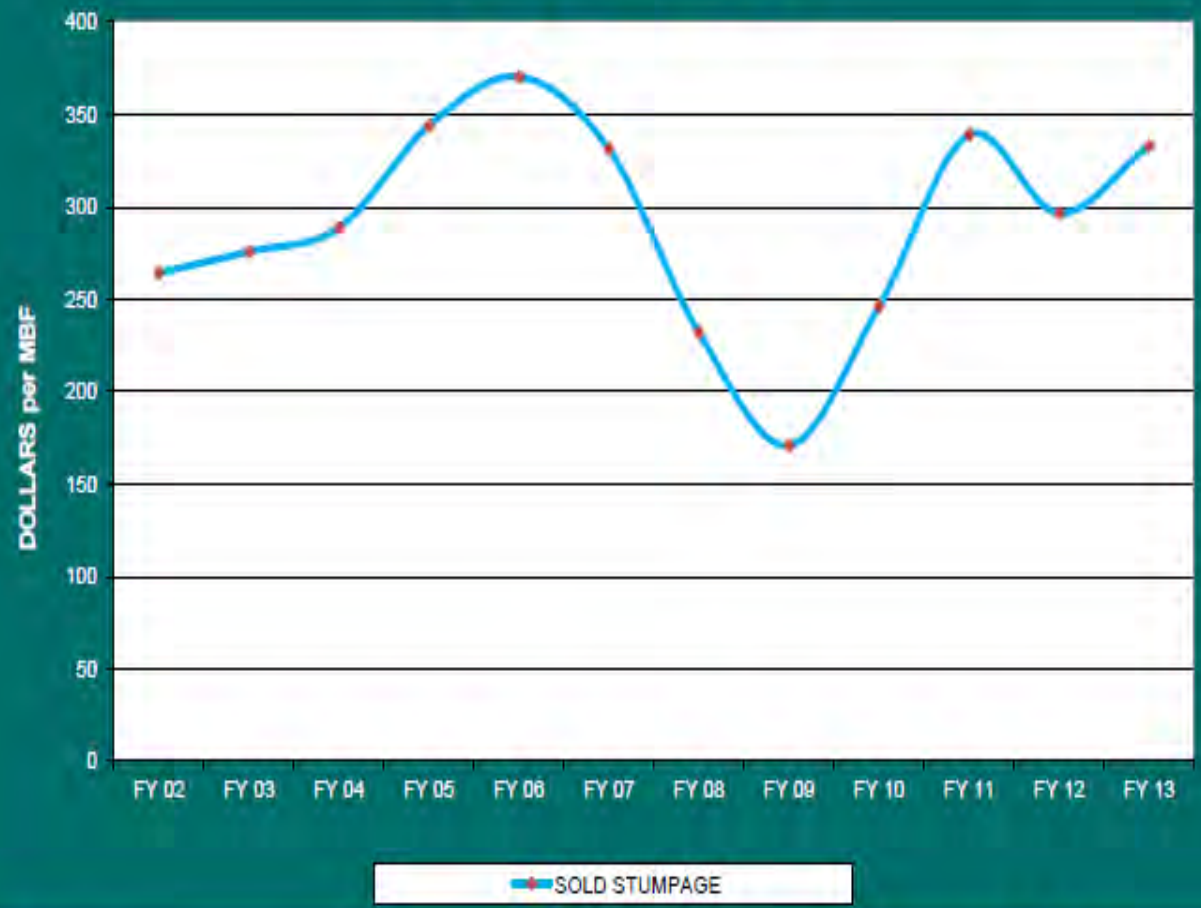
SRS proposed 2018: \$ 0.4 Million.

Timber Volume Sold

FY05-FY13 Sold Sales + Projected Sustainable Harvest Targets to End of Planning Decade



Stumpage Sales Values FY02-FY13



Practical Solutions:

GPNF officials and County Commissioners begin preparation now with these projects:

Wind River Watershed Management Plan.

Wind River Business Park Biomass Utility.

Resolution of WRBP water wells, plus easements and access for electric power, water, septic system.

Direct Stewardship contracts to County and to FYS for GPNF enhancement/restoration projects.

Enhance our relationship with the GPNF through a Cooperating Agency MOU for routine development and review of projects via the two GPNF collaboratives.